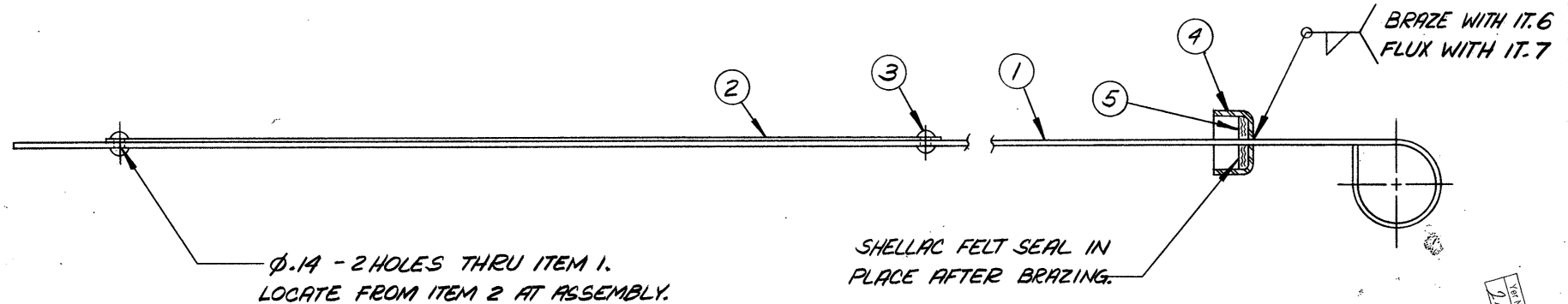
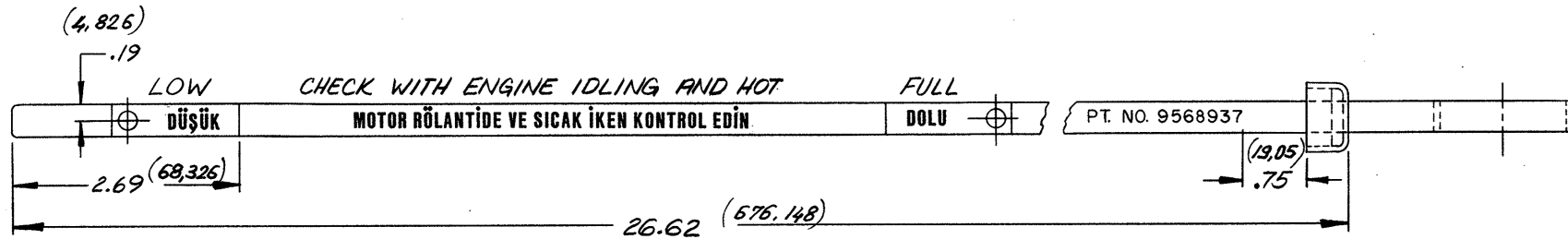
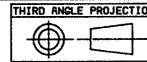


9568937

TOLERANCE ON ALL DIMENSIONS NOT
SPECIFIED ON THE DRAWING TO BE IN
ACCORDANCE WITH AT 2100BREAK ALL SHARP CORNERS
UNLESS OTHERWISE SPECIFIEDCOUNTERSINK ALL TAPPED HOLES
118° X ONE THREAD DEEPSURFACE FINISH SPEC ARE IN
ACCORDANCE WITH GM ENGR STDS.

ALL ENGLISH LETTERS
TO BE .12 HIGH.
STAMP AS SHOWN.

WELD BRAZE SPEC	A.I. 1651
FOR MANUFACTURING	

AR	EMS 869	BRAZING FLUX		7
AR	EMS 866	BRAZING ALLOY		6
1		SEAL	8071849	5
1		COVER	8071851	4
2		RIVET-1/8 BUTT	104051	3
1		NAMEPLATE	9568922	2
1		OIL GAUGE ROD	8071850	1

NO	RECD	MATERIAL/NOTES	NAME OF PART	PART NO	ITEM NO
ELECTRO-MOTIVE A DIVISION OF GENERAL MOTORS CORP. LAGRANGE, ILLINOIS 60525-U.S.A.					
DATE	1/18/89	PART NAME	OIL GAUGE ASM		
BY	J. Decker	21A084			
DATE	2/1/84	DESCRIPTION			
DATE	2/1/84	FIRST USED ON			
DATE	2/1/84	EX 44426			
DATE	2/1/84	G260W-2			
DATE	2/1/84	9568937			

REV	NO	REV	LET	REVISION	DATE	BY	APVD

REV	NO	REV	LET	REVISION	DATE	BY	APVD

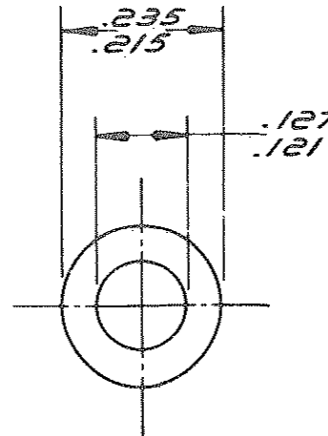
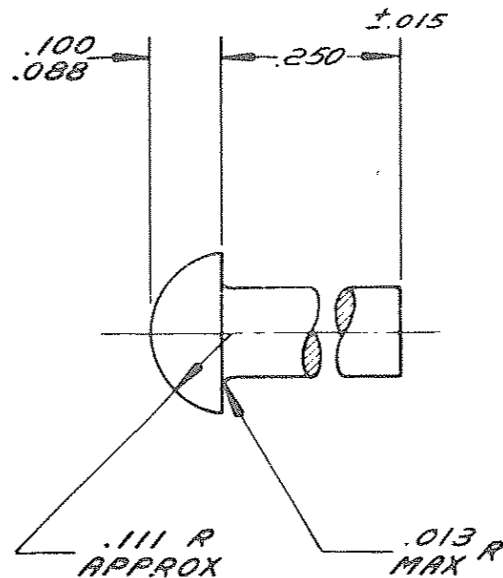
ENGINEERING STANDARDS SECTION

GENERAL MOTORS CORPORATION - G. M. TECHNICAL CENTER - WARREN, MICHIGAN

NO.

104051

DATE	SYM.	REVISION RECORD	AUTHORITY	DR.	CK.
5-16-63	B	REDRAWN & REVISED		JM	10X



Ver No	Sira No
17181	43

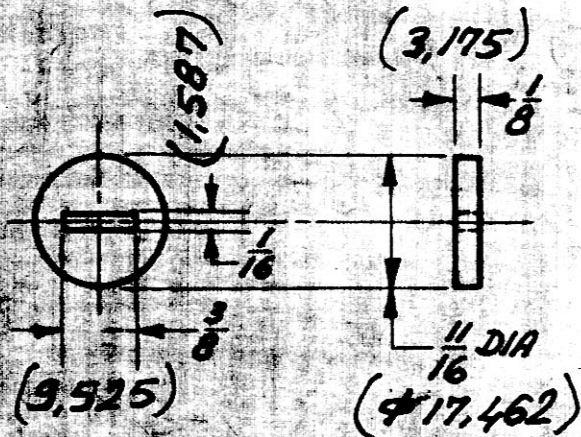
UNSPECIFIED DETAIL WITH RESPECT TO DIMENSIONS. MATERIAL. METHODS OF TEST, ETC. MUST CONFORM TO GENERAL SPECIFICATIONS PUBLISHED IN G M ENGINEERING STANDARDS. TOLERANCE PLUS OR MINUS .010 UNLESS OTHERWISE SPECIFIED.

DWG. DATE 10-8-47	SCALE	DR. JM
REFERENCE		CK. 10X
		APPR.
MATERIAL SPEC. SAE GRADE 0 STEEL ANNEALED - SEE GEN SPEC		
NAME RIVET - BUTTON HEAD SMALL SOLID		
PART NO. 104051		

DESCRIPTION 1/8 x 1/4
FINISH PLAIN

8071849

REV.	REVISION	BY	DATE
A	TRACED FOR NAVY	MM	9-4-41



1708-148

SAE F-1 FELT

ELECTRO-MOTIVE DIVISION

GENERAL MOTORS CORPORATION

LA GRANGE, ILLINOIS, U.S.A.

OIL GASEAL FELT SEAL

367

MADE BY

DATE

H. GREEN

7-8-42

8071849

REV.

REVISION

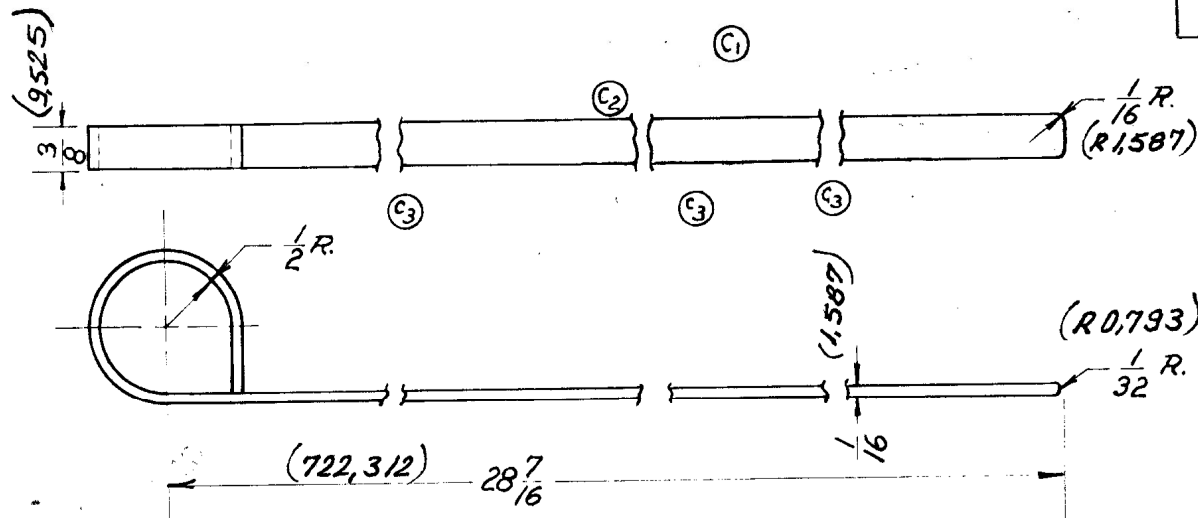
A

TOLERANCE ON FRACTIONAL DIMENSIONS $\pm \frac{1}{32}$

NAVY PLATE REKA 11-9-42

8071850

REV. LET.	DATE	REVISION	CHECKED BY	INSPECTED BY	APPROVED BY
A	10-6-42	TRACED FOR NAVY	KRUG	YOUNG	ELUX
B	8-8-44	b, WAS S.A.E. 1020 STEEL.	STRATFIELD	1.	2
C	4-24-45	R.F.C. NO. B 3069 C ₁ -NOTE REMOVED. C ₂ -GROOVES AND MARKINGS REMOVED. C ₃ -DIM'S. REMOVED	FISCHER	3	1/2



BREAK SHARP CORNERS.

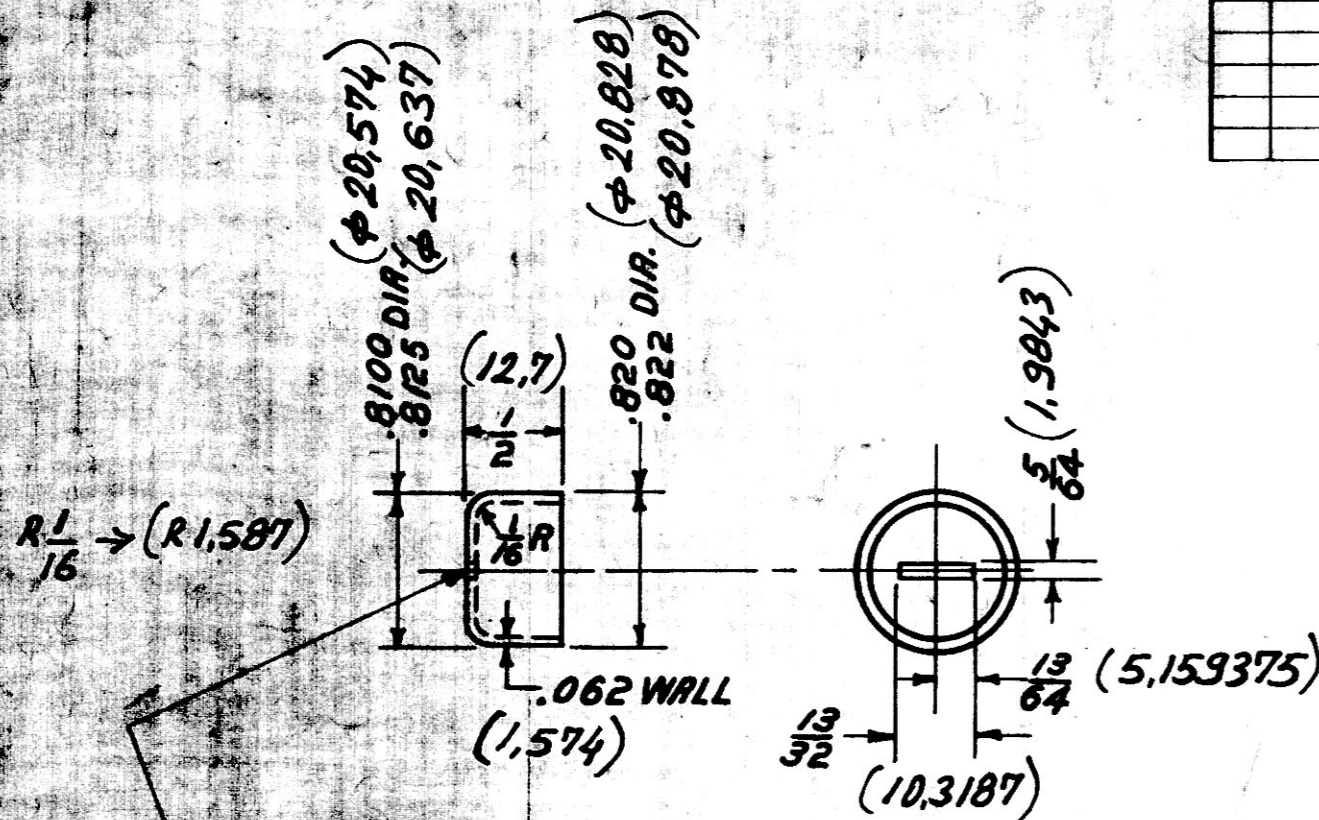
Yer No	Sira No
69	1051

COLD ROLLED S.A.E 1020 STRIP STEEL		1	
MATERIAL	DRAWING NUMBER	ITEM	NAME OF PART
ELECTRO-MOTIVE DIVISION GENERAL MOTORS CORPORATION LA GRANGE, ILLINOIS, U.S.A.			
OIL GAUGE ROD			
FIRST USED ON 567			
DR. GREEN	7-8-42	APPROVED	DRAWING NO.
CH WESEMAN	7-13-42	ELUX	8071850
INSP. NICHOLSON	7-13-42		
DATE OF PRINT		REVISION	A/B/C

TOLERANCE ON FRACTIONAL DIMENSIONS $\pm \frac{1}{32}$
CASTINGS
MACHINING

8071851

REV.	REVISION	BY	DATE
A	TRACED FOR NAVY	WEP EUSAL	9-4-42



PUNCH THIS HOLE IN
KICKHAFFER MFG. CO'S
STD. CORE HOLE PLUG
CP-16 TYPE "A"

TOLERANCE ON FRACTIONAL DIMENSIONS $\pm \frac{1}{32}$

1708 149

MATERIAL: SEE NOTE

ELECTRO-MOTIVE DIVISION
GENERAL MOTORS CORPORATION
LA GRANGE, ILLINOIS, U.S.A.

567

MADE BY
H. GREEN

DATE
7-8-42

DWG
NO.

8071851

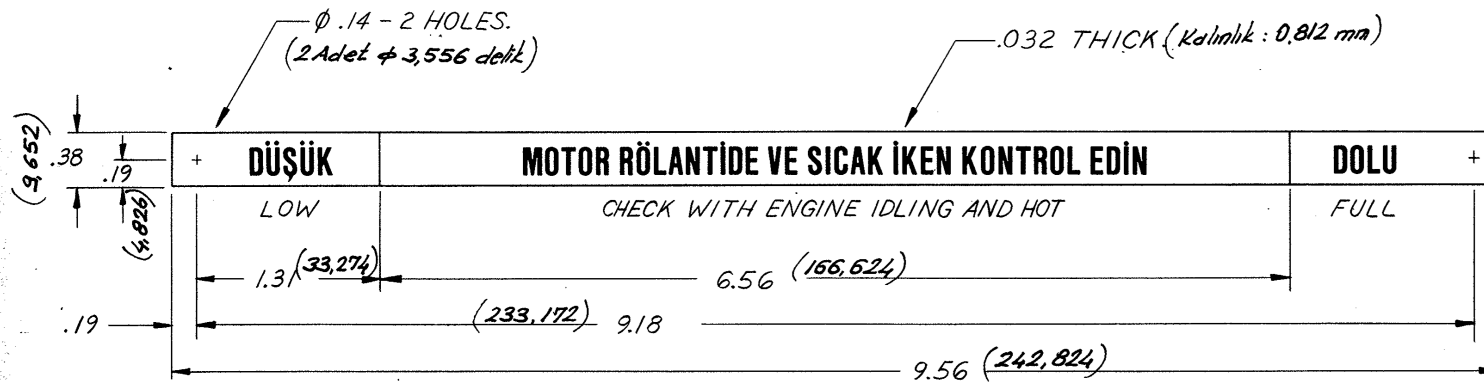
DATE OF
PRINT

REVISION

A

NAVY PLATE REV. A 11-9-42

9568922



ANODIZE .0004 MIN. THICKNESS.
CHARACTERS TO BE ETCHED .005 DEEP
AND ENAMELLED WHITE.
BLACK BACKGROUND.
COAT WITH CLEAR EPOXY.

REV NO
211309
SİHA NO

RFC NO		REV LET		REVISION		DATE		BY		APVD		RFC NO		REV LET		REVISION		DATE		BY		APVD	
<p>TOLERANCE ON ALL DIMENSIONS NOT SPECIFIED ON THE DRAWING TO BE IN ACCORDANCE WITH A.1.2400. BREAK ALL SHARP CORNERS UNLESS OTHERWISE SPECIFIED.</p> <p>THE FOLLOWING ITEMS APPLY UNLESS OTHERWISE SPECIFIED:</p> <p>FOR DIAMETRAL FEATURES, ROUNDNESS MUST BE WITHIN THE MAXIMUM MATERIAL CONDITION AND MINIMUM MATERIAL CONDITION BOUNDARY. SEPARATE TRUE POSITION CALLOUTS MAY BE GAGED SEPARATELY. REGARDLESS OF DATUM REFERENCE.</p> <p>GEOMETRIC DRAWING SYMBOLS:</p> <p>□ FLAT / RUNOUT / TOTAL RUNOUT / ROUNDNESS ∠ ANGULAR / STRAIGHT / TRUE POSITION / CYLINDRICAL ⊙ CONCENTRIC / SQUARE / DIAMETER / PARALLEL ⊕ PROFILE OF A SURFACE / PROFILE OF A LINE ⊖ MAXIMUM MATERIAL CONDITION (MMC) / DATUM IDENTIFICATION ⊕ PROJECTED TOL. ZONE ⊖ REGARDLESS OF FEATURE SIZE (RFS) / BASIC DIMENSION / DATUM TARGET</p> <p>THIRD ANGLE PROJECTION</p> <p>NO REQD</p> <p>MATERIAL/NOTES</p> <p>MATERIAL</p> <p>EMS 309 H14 ALUMINUM</p> <p>NAME OF PART</p> <p>ELECTRO-MOTIVE</p> <p>A DIVISION OF GENERAL MOTORS CORP. LAGRANGE, ILLINOIS 60525 U.S.A.</p> <p>PART NO</p> <p>9568922</p> <p>ITEM NO</p> <p>9318253</p> <p>DESCRIPTION</p> <p>OIL LEVEL DIPSTICK (TURKEY)</p> <p>DATE</p> <p>20AUB4</p> <p>DATE</p> <p>21AUB4</p> <p>DATE</p> <p>30AUB4</p> <p>DATE</p> <p>31AUB4</p> <p>DATE</p> <p>32AUB4</p> <p>DATE</p> <p>33AUB4</p> <p>DATE</p> <p>34AUB4</p> <p>DATE</p> <p>35AUB4</p> <p>DATE</p> <p>36AUB4</p> <p>DATE</p> <p>37AUB4</p> <p>DATE</p> <p>38AUB4</p> <p>DATE</p> <p>39AUB4</p> <p>DATE</p> <p>40AUB4</p> <p>DATE</p> <p>41AUB4</p> <p>DATE</p> <p>42AUB4</p> <p>DATE</p> <p>43AUB4</p> <p>DATE</p> <p>44AUB4</p> <p>DATE</p> <p>45AUB4</p> <p>DATE</p> <p>46AUB4</p> <p>DATE</p> <p>47AUB4</p> <p>DATE</p> <p>48AUB4</p> <p>DATE</p> <p>49AUB4</p> <p>DATE</p> <p>50AUB4</p> <p>DATE</p> <p>51AUB4</p> <p>DATE</p> <p>52AUB4</p> <p>DATE</p> <p>53AUB4</p> <p>DATE</p> <p>54AUB4</p> <p>DATE</p> <p>55AUB4</p> <p>DATE</p> <p>56AUB4</p> <p>DATE</p> <p>57AUB4</p> <p>DATE</p> <p>58AUB4</p> <p>DATE</p> <p>59AUB4</p> <p>DATE</p> <p>60AUB4</p> <p>DATE</p> <p>61AUB4</p> <p>DATE</p> <p>62AUB4</p> <p>DATE</p> <p>63AUB4</p> <p>DATE</p> <p>64AUB4</p> <p>DATE</p> <p>65AUB4</p> <p>DATE</p> <p>66AUB4</p> <p>DATE</p> <p>67AUB4</p> <p>DATE</p> <p>68AUB4</p> <p>DATE</p> <p>69AUB4</p> <p>DATE</p> <p>70AUB4</p> <p>DATE</p> <p>71AUB4</p> <p>DATE</p> <p>72AUB4</p> <p>DATE</p> <p>73AUB4</p> <p>DATE</p> <p>74AUB4</p> <p>DATE</p> <p>75AUB4</p> <p>DATE</p> <p>76AUB4</p> <p>DATE</p> <p>77AUB4</p> <p>DATE</p> <p>78AUB4</p> <p>DATE</p> <p>79AUB4</p> <p>DATE</p> <p>80AUB4</p> <p>DATE</p> <p>81AUB4</p> <p>DATE</p> <p>82AUB4</p> <p>DATE</p> <p>83AUB4</p> <p>DATE</p> <p>84AUB4</p> <p>DATE</p> <p>85AUB4</p> <p>DATE</p> <p>86AUB4</p> <p>DATE</p> <p>87AUB4</p> <p>DATE</p> <p>88AUB4</p> <p>DATE</p> <p>89AUB4</p> <p>DATE</p> <p>90AUB4</p> <p>DATE</p> <p>91AUB4</p> <p>DATE</p> <p>92AUB4</p> <p>DATE</p> <p>93AUB4</p> <p>DATE</p> <p>94AUB4</p> <p>DATE</p> <p>95AUB4</p> <p>DATE</p> <p>96AUB4</p> <p>DATE</p> <p>97AUB4</p> <p>DATE</p> <p>98AUB4</p> <p>DATE</p> <p>99AUB4</p> <p>DATE</p> <p>100AUB4</p> <p>DATE</p>																							